

2022 Waka Ama Long Distance Nationals

WAITANGI –Thursday 6th - Sunday 9th OCTOBER 2022

Pānui 2 | June 2022

★ Mānawatia a Matariki ki a koutou katoa ★

Te Tai Tokerau Polynesian Canoe Association and Tai Kotuku Waka Ama Club in association with Waka Ama New Zealand (WANZ), are proud to host the 2022 Waka Ama Long Distance Nationals (LDNs) to be held in Waitangi 6th – 9th October 2022



IMPORTANT DATES

31 Aug 2022	Entries close
13 Sep 2022	Roster closes
From 13 Sep 2022	Once the roster is completed - clubs will be invoiced
6 Oct 2022	LDN Pōwhiri 4pm Te Tii Marae, Waitangi
7 Oct 2022	Race 1, 2 & 3
8 Oct 2022	Race 4, 5 and 6
9 Oct 2022	Back-Up Race Day

VENUE

The venue is based at and surrounding the Bay of Islands Yacht Club, Ti Point, Waitangi, Bay of Islands.

Key links and information

- Yacht club website: <https://www.boiyc.org/> - registration and administration will run out of here.
- For more information about visiting the Waitangi Treaty Grounds <https://www.waitangi.org.nz/>
- For more information about what to see and do in the Bay of Islands:
<https://www.northlandnz.com/visit/destinations/bay-of-islands/>
- Check out the event [Facebook page](#) - updates will be continued to be loaded here

The pōwhiri will take place at Te Tii Waitangi Marae - 25 Te Kemara Ave, Waitangi
www.waitangimarae.co.nz

WAKA HIRE

Waka Ama NZ has created a sheet for waka hire: [2022 Long Distance Nationals - Waka Hire](#)
This is for W6 waka hire only.

Waka hire must be completed directly between the clubs hiring out and the clubs wanting to hire. All contact information and availability of waka are available on the sheet. This sheet is live and automatically updates.

Each club hiring out waka must set their own hireage fee and must liaise directly with the club wanting to hire to confirm hireage and arrange payment.

Clubs hiring out waka:

1. Email ldn@wakaama.co.nz if you have waka available to hire for the event. Please include:
 - a. Club contact **name, email, and phone number** (this needs to be the person dealing with all waka hire for your club, only one contact per club)
 - b. Include how many waka you have available to hire & the name of each waka
2. Your contact details and available waka will be added to the hire sheet.
3. You will be given editing access to [2022 Long Distance Nationals - Waka Hire](#) where you will be responsible for updating your bookings. Please do this as soon as you confirm bookings.

Note: Include where your waka is in use by your own club by selecting the **In Use By Club** option.

Clubs wanting to hire waka:

1. Check the availability of waka in [2022 Long Distance Nationals - Waka Hire](#)
2. Email directly to the club contact requesting hireage. Include the race waka required for, club/team/division, and contact name/number.
3. Complete hireage booking with the club and complete payment directly to them once they have confirmed your booking

FIRST AID

The onsite First aid will be provided by St Johns

WORLD DISTANCE 2023

This event will not be the qualifier for the 2023 IVF Va'a World Distance Championship in Samoa. More information regarding this will be shared in the coming months.

BACK UP RACE DAY

If the weather or sea conditions make it unsafe to paddle any one of the allocated races then Sunday, 9th October 2022 is the backup race day. Paddlers are advised to make plans to be available that day.

ENTRY FEES

The fees for all entries received prior to 13 Sept are:

Grade	W6	W1 Rudderless/W1 Rudder/W2	Combination
Seniors	\$60 each	\$60 each	\$90 each
Juniors	\$40 each	\$40 each	\$60 each

NOTE:

- If a senior paddler is entered in both the W6 and W1 Rudderless/W1 Rudder races the entry fee payable is \$90.00.
- If a Junior paddler is entered in both the W6 and W1 Rudderless/W1 Rudder races, the entry fee payable is \$60.00.
- Entry into a third event would cost a further \$30.00 for seniors and \$20.00 for Juniors ie: W6 + W1+W2 = \$120.00/Senior or \$80/Junior.

PENALTIES

Any late additions/changes/withdrawals after the 13th of September a \$20 per paddler late fee will apply e.g. division changes, paddler swap, additions.

Any club that withdraws teams after being invoiced will still be charged the full entry fee.

All team entries are to be entered via the Waka Ama New Zealand website through your Club Coordinator.

REFUND POLICY

- Entry withdrawals received before 13 September 2022 will receive a full refund
- No refunds will be given for any withdrawals after the 13 September 2022
- No refund will be given if the event is cancelled due to a natural disaster or extreme weather

Should the event be cancelled before 4 October 2022 due to Covid-19, a full refund will be given.

RACE DISTANCES AND COURSES

All racecourses are in the Bay of Islands (you can find the race maps in the appendices). The racecourses are set based on the weather and ocean conditions to provide all paddlers with an enjoyable, challenging, and safe experience.

Waka	Distance	Divisions	Categories
W6:	22-26km	Open, Master and Senior Master	Men, Women & Mixed
	14-16km	Gld Master, Master 70, J19	Men, Women & Mixed
	8-10km	J16	Men, Women & Mixed
	8-10km	Adaptive	Mixed
	8-10km	Short course*	Men, Women and Mixed*
W1 Rudderless/ W1 Rudderless	14-16km	Seniors (U23, Open, Master, Snr Master)	Men & Women
	8-10km	Gld Master, Master 70, J16, J19	Men & Women
W1	8-10km	Adaptive	Men & Women
W2/W3:	14-16km	Seniors (U23, Open, Master, Snr Master)	Men, Women & Mixed
	8-10km	Gld Master, Master 70, J16, J19	Men, Women & Mixed
W2	8-10km	Adaptive	Men, Women & Mixed

*Not a medal category

COMPETITORS ABILITY

We are providing opportunities for experienced and capable crews and individuals in age categories from J16 and above. The term “experienced” means that teams and individuals have experience in open sea conditions. All Clubs are responsible for ensuring that all paddlers are competent in the divisions that they have been entered into. The Race Director has the discretion to withdraw a team or an individual who is deemed to be unfit or unprepared to complete the race.

The short course race will provide an opportunity to those paddlers who are experienced but are unable to complete the senior distance – the short course events will not be eligible for medals.

J16, J19 and Short Course events will not be held in conditions considered to be open ocean.

VERIFICATIONS

Please ensure you send verification documents through nice and early. All paddlers entered must be verified and affiliated to add their names to the club roster.

RACE DIVISIONS

All age groups are outlined in the Waka Ama New Zealand Race Rules, rule 50.2. Note: J16 minimum age is 11 and J19 Competitors must be a minimum age of 14 in the year of competition.

DIVISION	Minimum (Age as of 31 December 2022)	Maximum (Age as of 31 December 2022)
Junior 16	11	16
Junior 19	14	19
U23	16	23
Open	16	None
Masters	40	None
Senior Masters	50	None
Golden Masters	60	None
Master 70	70	None

- All New Zealand entrants must be from clubs that are affiliated with Waka Ama New Zealand.
- All paddlers must be verified to enter
- Entrants from overseas clubs are welcome to register for this event but will not be eligible for medals.
- The adaptive teams must comprise of three adaptive paddlers and three non-adaptive paddlers.
- Mixed W6 teams must have at least 3 Women
- Mixed W2 teams must be made up of 1 man and 1 woman
- Mixed W3 teams must have at least 1 woman

RACE RULES

The race rules are currently under review - the updated rules and any changes will be included in Pānui 3.

ACCOMMODATION

- **Paihia** - The Paihia township has lots of accommodation and there are also lodges, Airbnb, backpackers and a range of accommodation.
- **Kerikeri** - Kerikeri also has ample motels and hotels which are 23km away from the race venue.
- **Haruru** - Haruru has a number of Motels and Airbnb options and is close to the race venue
- **Kawakawa & Moerewa** - Local options for accommodation - are within reasonable driving distance to the race venue.
- **Marae** - Hiruhārama Hou (Te Tii), Kawiti (Waiomio), Oromāhoe, Otiria (Moerewa), Parawhenua (Te Ahuahu), Rāwhitiroa (Te Ahuahu), Tauwhara (Waimate North)
- **Te Tii Waitangi B3 Trust** - <https://www.tetiiwaitangi.co.nz/accommodation/te-tiriti-beach-houses.html>

TRAVEL

The Bay of Islands Airport is roughly 20 minutes away from the race venue, with lots of arrival flights throughout the day. It is over a 3-hour drive from Auckland. Please note that the taxi service from the Bay of Islands airport is limited. You should pre-book any transport or transfers prior to your arrival.

VENDORS

We are now accepting applications for Vendors. Vendor information is available online here: [2022 Long Distance Nationals - Waka Ama NZ](#)

If you have any questions please contact ldn@wakaama.co.nz

VOLUNTEERS

We are asking for our TTPCA Volunteers to register now. Please contact ldn@wakaama.co.nz if you would like to volunteer.

RACE PROGRAMME (Subject to change)

Thursday 6th October

8:00am – 3.45pm	Trailer Parking will be open
2.00pm to 3.45pm	Registrations and administration enquiries open
4.00pm	Pōwhiri at Te Tii Waitangi Marae
5:00pm till late	Trailer parking open

Friday 7th October

Registrations Open: 6.30am

Race 1 Race Briefing: 7:15 am Race Start: 8:00 am		
U23 Women, Open Women, Master Women, Snr Master Women	W1 Rudderless	14-16 km
J19 Women, Gld Master Women, Master 70 Women	W1 Rudderless	8-10 km
U23 Men, Open Men, Master Men, Snr Master Men	W1 Rudderless	14-16 km
J19 Men, Gld Master Men, Master 70 Men	W1 Rudderless	8-10 km
U23 Women, Open Women, Master Women, Snr Master Women	W2/W3	14-16 km
J19 Women, Gld Master Women, Master 70 Women	W2/W3	8-10 km
U23 Mixed, Open Mixed, Master Mixed, Snr Master Mixed	W2/W3	14-16 km
J19 Mixed, Gld Master Mixed, Master 70 Mixed	W2/W3	8-10 km

Race 2 Race Briefing: 10:45 am Race Start: 11:30 am		
U23 Women ,Open Women, Master Women, Snr Master Women	W1 Rudderless	14-16 km
J19 Women, Gld Master Women, Master 70 Women	W1 Rudderless	8-10 km
U23 Men, Open Men, Master Men, Snr Master Men	W1 Rudderless	14-16 km
J19 Men, Gld Master Men, Master 70 Men	W1 Rudderless	8-10 km
U23 Men, Open Men, Master Men, Snr Master Men	W2/W3	14-16 km
J19 Men, Gld Master Men, Master 70 Men	W2/W3	8-10 km

Race 3 Race Briefing: 12:45 pm Race Start: 1:30 pm		
J16 Men, J16 Women, J16 Mixed	W6	8-10 km
Open Men, Open Women, Open Mixed Short-course	W6	8-10 km
Adaptive Mixed	W6	8-10 km

Saturday 8th October

Registration Open 6:30 am

Race 4 – Senior Women W6, J16 & Adaptive W1 Race Briefing: 7:15 am Race Start: 8:00 am		
Open, Master & Snr Master Women	W6	22-26 km
J19 Women, Gld Master, Master 70 Women	W6	14-16 km

J16 Women	W1 Rudderless	8-10 km
J16 Men	W1 Rudderless	8-10 km
Adaptive Women	W1	8-10 km
J16 Men	W2/W3	8-10 km
Adaptive Men	W2/W3	8-10 km
Race 5 – Senior Mixed W6, J16 and Adaptive W1 Race Briefing: 10:15 am Race Start: 11:00 am		
Open, Master & Snr Master Mixed	W6	22-26 km
J19 Mixed, Gld Master Mixed, M70 Mixed	W6	14-16 km
J16 Women	W1 Rudderless	8-10 km
J16 Men	W1 Rudderless	8-10 km
Adaptive Men	W1	8-10 km
J16 Women & Mixed	W2/W3	8-10 km
Adaptive Women & Mixed	W2/W3	8-10 km
Race 6 – Men W6 Race Briefing: 12:15 pm Race Start: 2:00 pm		
Open, Master & Snr Master Men	W6	22-26 km
J19 Men, Gld Master Men, M70 Men	W6	14-16 km

Prizegiving 5.00pm

QUESTIONS AND ENQUIRIES

For any further information please head to <https://wakaama.co.nz/racecalendar/lookup/1824> or contact us at ldn@wakaama.co.nz

On behalf of Te Tai Tokerau, we look forward to hosting you all in Waitangi for LDN 2022.

Or for more information check out the event Facebook page here: <https://www.facebook.com/wakaamaLDN/>

APPENDICES

- APPENDIX A: Venue Directions
- APPENDIX B: Course Maps
- APPENDIX C: Car & Trailer Parking

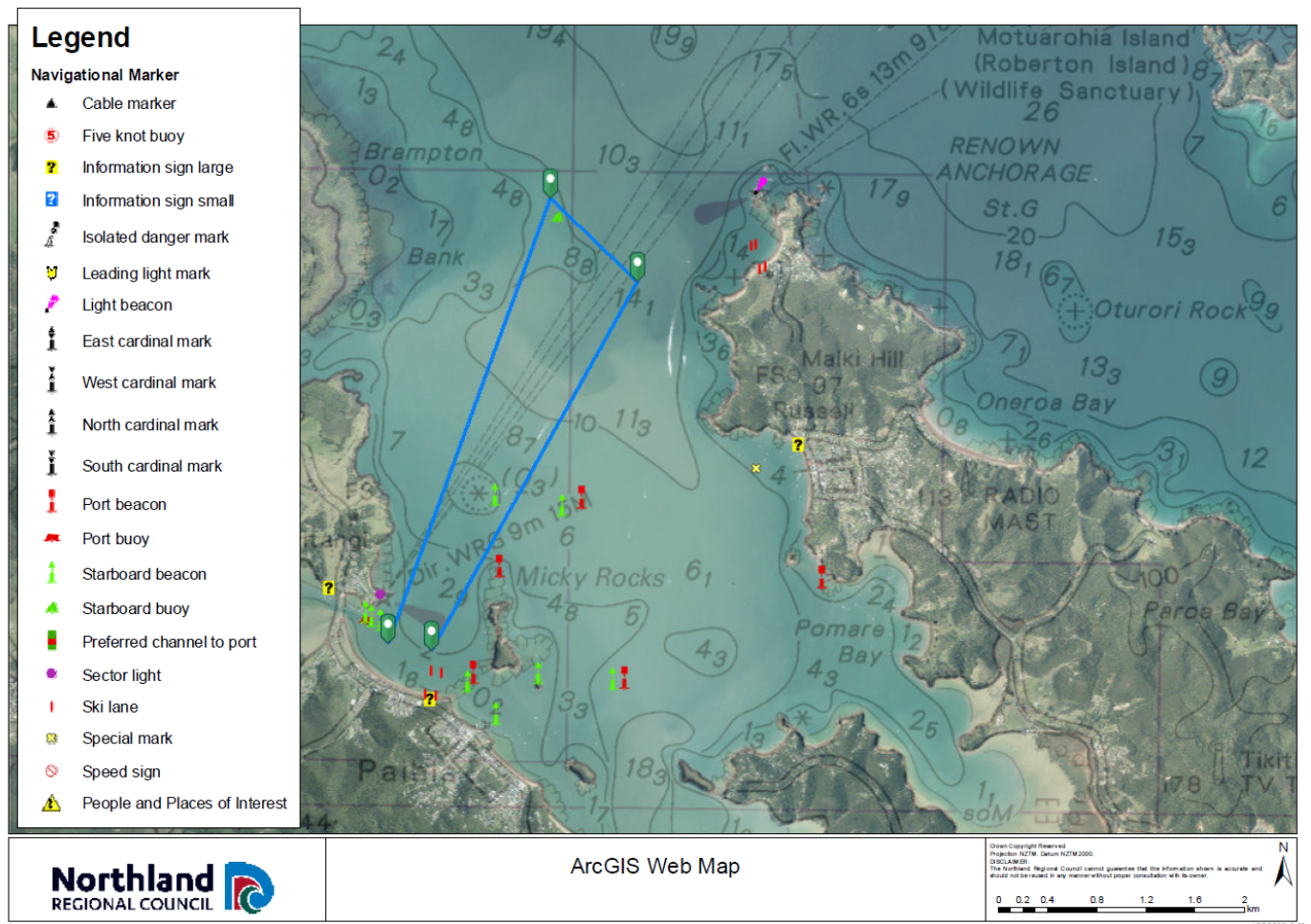
APPENDIX A: VENUE DIRECTIONS

Bay of Islands Yacht Club

Waitangi 0293 - Directions - <https://goo.gl/maps/AUrnddqtXGQr2jB7>

APPENDIX B: COURSE MAP

8KM COURSE (Alternate course to follow in Panui 3)



APPENDIX C: CAR AND TRAILER PARKING - Over flow Te Tii

